

# STM32

## A Brief Introduction

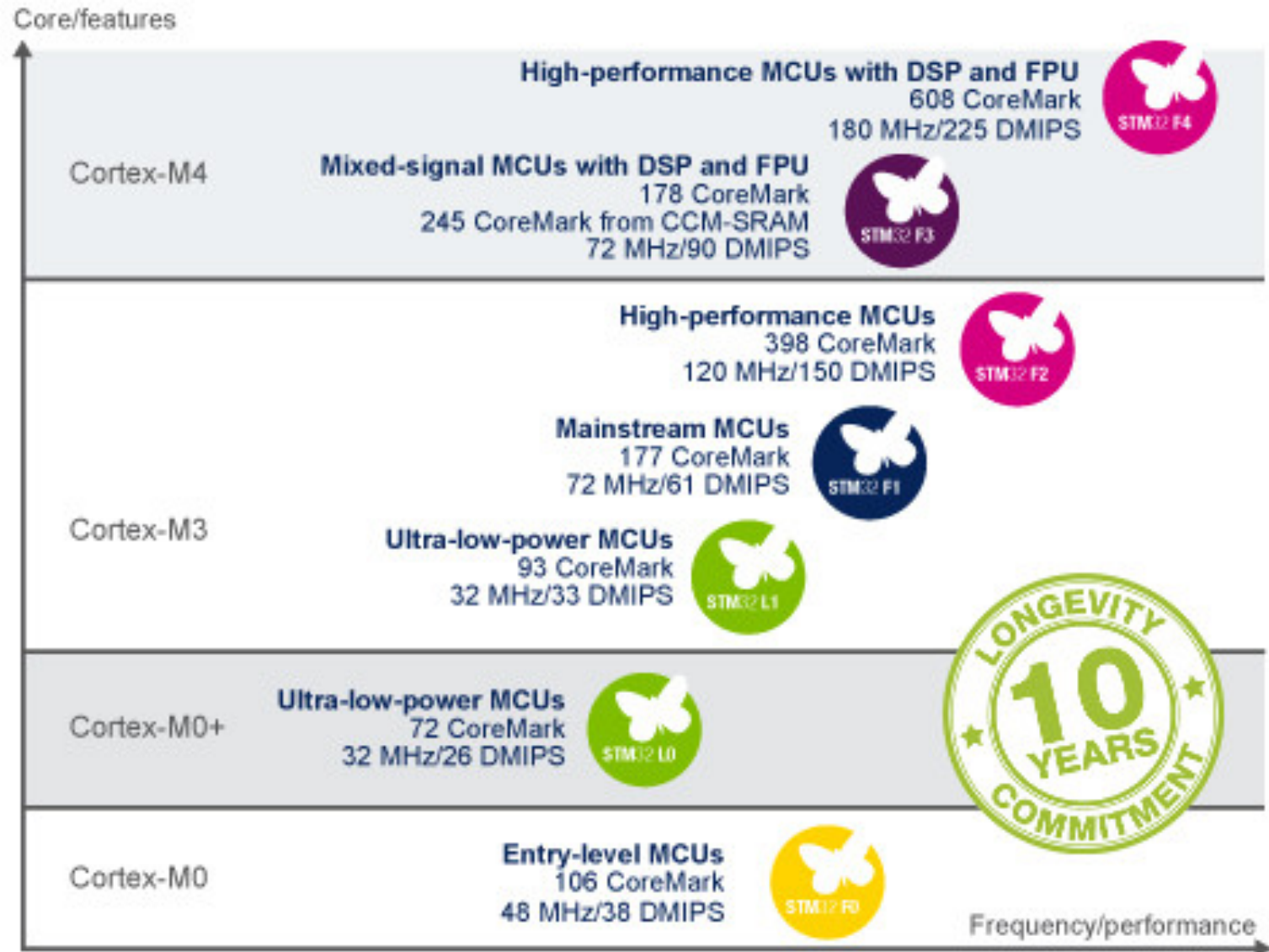
Jon Sowman



# What are they?

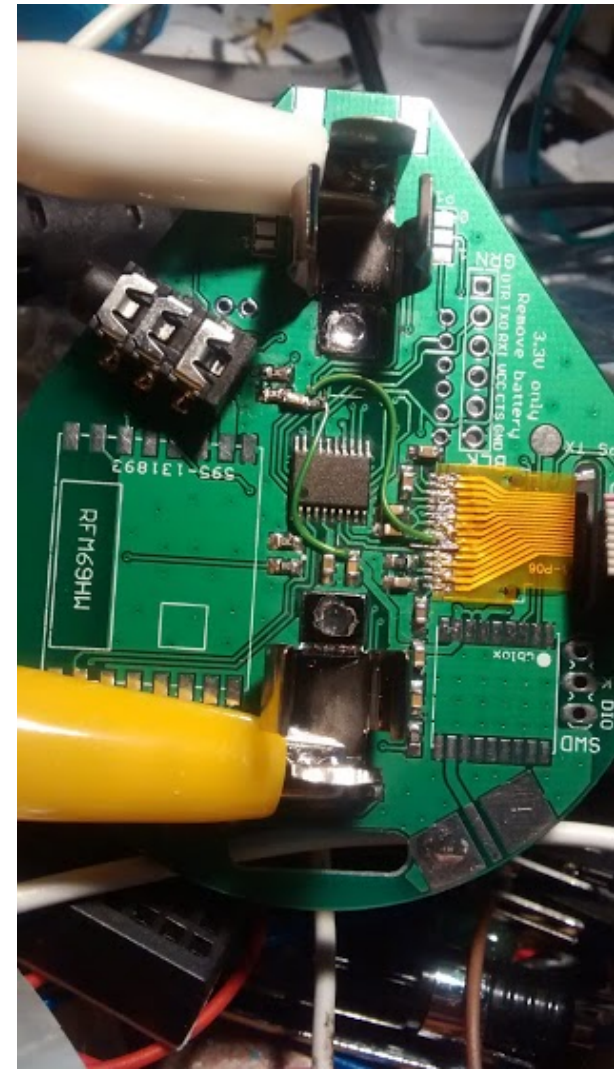
- Modern microprocessors
- Core designed and licensed by ARM
- 3rd ARM family by ST
  - Add peripherals and manufacture the chip
  - Library support
- 32 bit RISC core (*thumb2*)
- Gathering a hobbyist following

# Range

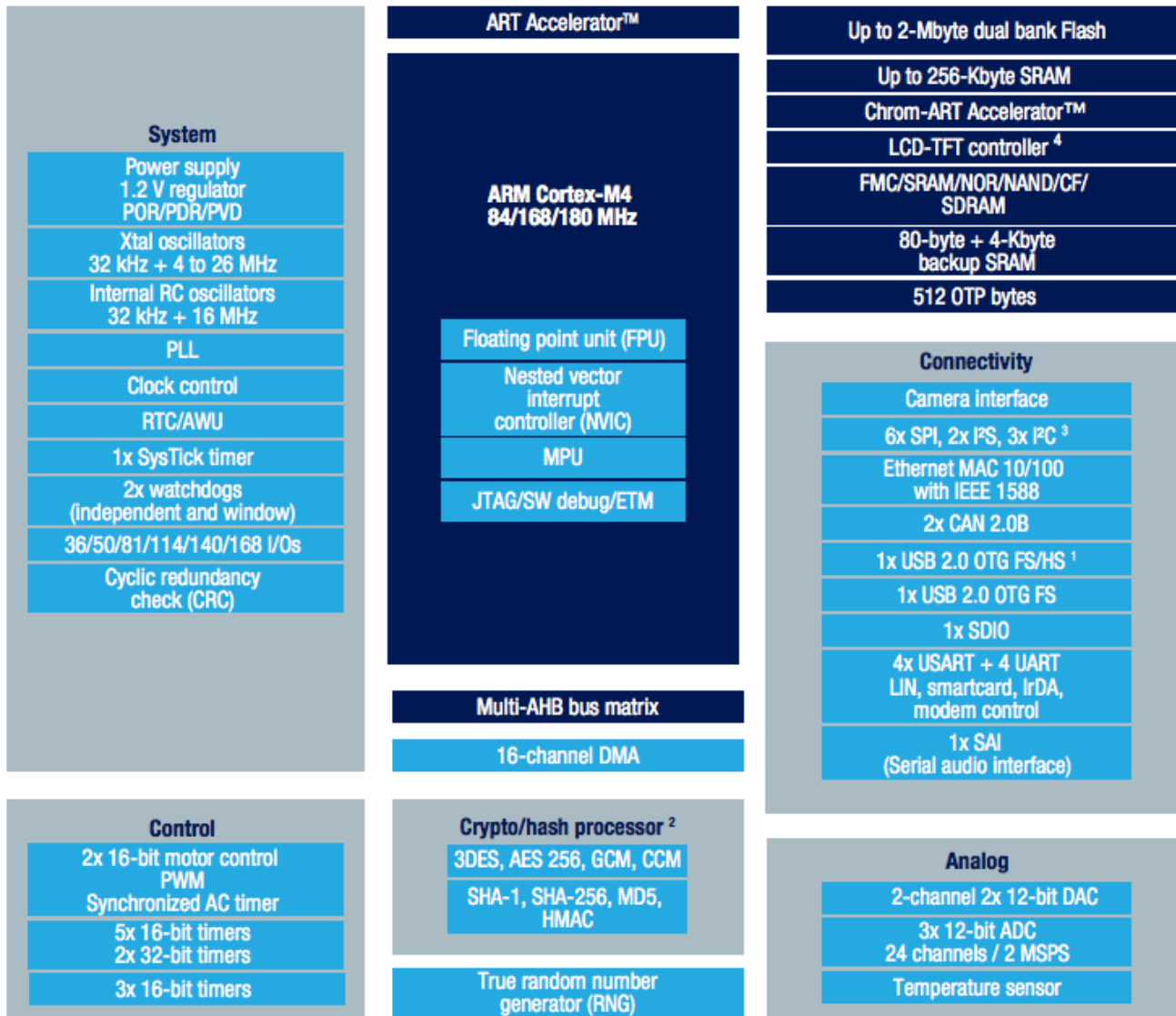


# Why are they better?

- **Peripherals**
  - Higher density
  - Faster/bigger/better
    - NVIC particularly
- **Cheap**
  - Dev boards are £6-7
  - Badge CM0 is 77p!
- **Excellent debugging**
  - JTAG/SWD (Serial Wire Debug)
  - Run/halt; timer control; tracepoints/watchpoints
- **Fast!**
  - M0 48MHz, M3 72MHz, M4 180MHz!



# Peripherals (CM4 example)

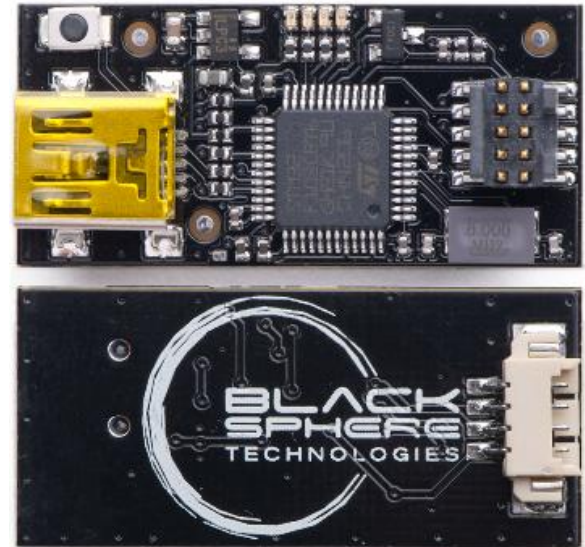


# Peripheral Libraries

- **Peripherals are flexible but complex!**
  - e.g. Advanced Control Timers (20 x 32bit registers)
  - Use of a library eases development (c.f. AVR)
- **Standard Peripheral Library**
  - Developed by ST
- **libopencm3**
  - Open source, community developed project
  - Under development but very useable (examples)

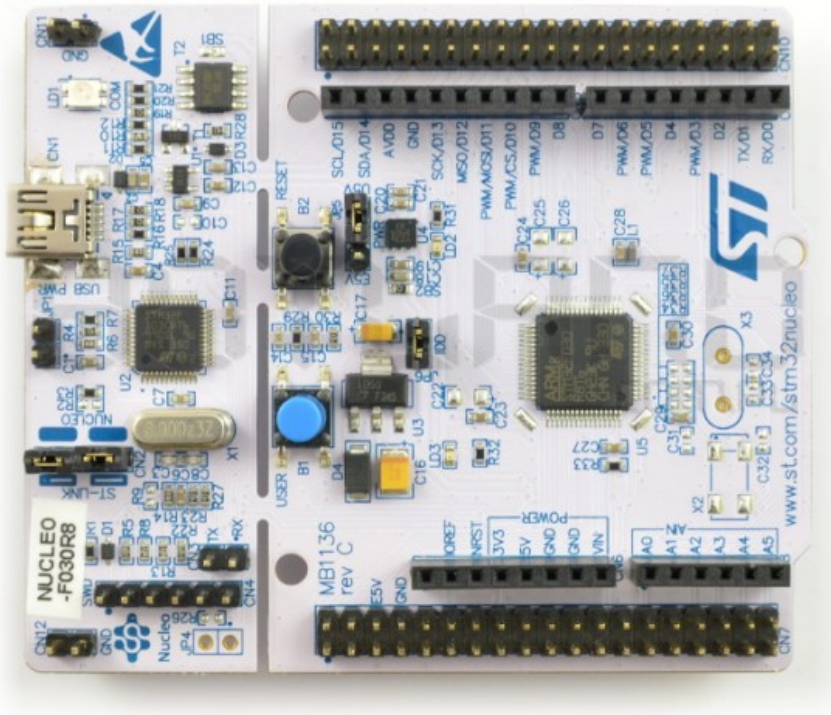
# Programmers/Debuggers

- Hardware to flash and debug
  - (Flash) Similar to AVRISP
  - (Debug) Control state of target
- ST-Link/V2 (~£30)
  - “Official” ST tool
  - Nucleo and Discovery boards have built in ST-Link
- Serial bootloader
  - STM32 only
- Blackmagic Probe (BMP) (~\$60)
  - Open source project
  - Talks directly to gdb
  - No openocd or gdb stubs :)



# How can I play with one?

Discovery and nucleo (mbed compat) boards



ST-LINK

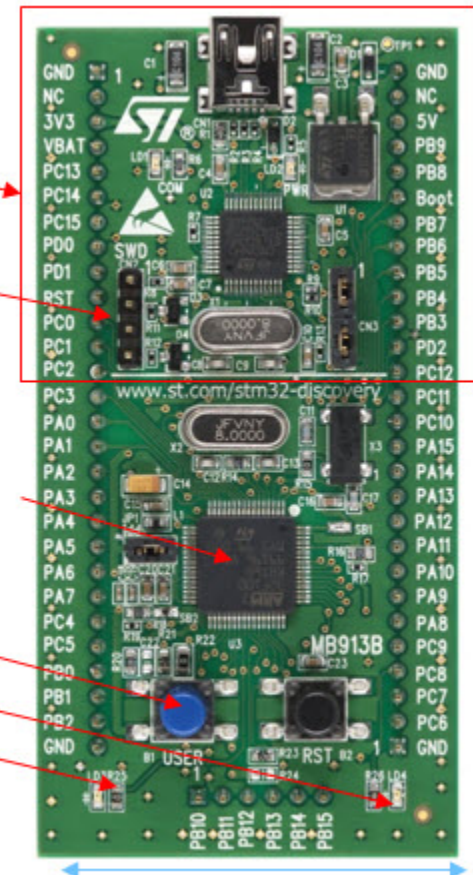
SWD connector

STM32F100RBT6B

User button

Led Blue

Led Green



84mm

42mm



# Documentation

- **ST Datasheet**
  - Device specific (e.g. F051)
  - Anything that is specific to single device in the range
- **ST Reference manual**
  - Family specific (e.g. F0x1)
  - Everything else!
- **Firmware examples**
  - ST package examples for the SPL
  - libopencm3 has examples demonstrating use of peripherals via its API
  - [github.com/libopencm3/libopencm3-examples](https://github.com/libopencm3/libopencm3-examples)